

DUBAI AUTODROME

FACILITY GUIDE

1. Circuit & Facilities

All Circuit Configurations

DUBAI AUTODROME



DUBAI AUTODROME

CIRCUIT HIRE RATES 2016

The Dubai Autodrome is a full 5.6km FIA Grade 1 circuit.

With the ability to operate six different combinations and three circuits at the same time, this makes it a great multi-purpose venue for events and activities.

Oval Handling



1.12km

FULL DAY
AED 18,000
09:00 - 12:30 &
13:30 - 17:00

1/2 DAY
AED 9,000
09:00 - 12:30 or
13:30 - 17:00

INCLUDES:
• Full Safety & Medical Cover

Hill Handling



1.62km

FULL DAY
AED 25,000
09:00 - 12:30 &
13:30 - 17:00

1/2 DAY
AED 12,500
09:00 - 12:30 or
13:30 - 17:00

INCLUDES:
• Full Safety & Medical Cover

Club

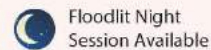


2.46km

FULL DAY
AED 55,000
09:00 - 12:30 &
13:30 - 17:00

1/2 DAY
AED 27,500
09:00 - 12:30 or
13:30 - 17:00 or
18:00 - 21:30

INCLUDES:
• Full Safety & Medical Cover
• Race Administration Centre
• Technical Bay Garage
• 3 Blocks of a Paddock Garage



Floodlit Night
Session Available

National



3.56km

FULL DAY
AED 65,000
09:00 - 12:30 &
13:30 - 17:00

1/2 DAY
AED 32,500
09:00 - 12:30 or
13:30 - 17:00

INCLUDES:
• Full Safety & Medical Cover
• Race Administration Centre
• Technical Bay Garage
• 3 Blocks of a Paddock Garage

International



4.29km

FULL DAY
AED 75,000
09:00 - 12:30 &
13:30 - 17:00

1/2 DAY
AED 37,500
09:00 - 12:30 or
13:30 - 17:00

INCLUDES:
• Full Safety & Medical Cover
• Race Administration Centre
• Technical Bay Garage
• 3 Blocks of a Paddock Garage

Grand Prix



5.39km

FULL DAY
AED 90,000
09:00 - 12:30 &
13:30 - 17:00

1/2 DAY
AED 45,000
09:00 - 12:30 or
13:30 - 17:00

INCLUDES:
• Full Safety & Medical Cover
• Race Administration Centre
• Technical Bay Garage
• 3 Blocks of a Paddock Garage
• Exclusive Full Circuit Use

Off-Road Zone



FULL DAY
AED 8,500
09:00 - 12:30 &
13:30 - 17:00

1/2 DAY
AED 4,250
09:00 - 12:30 or
13:30 - 17:00

INCLUDES: Full Safety & Medical Cover

Prices are valid for bookings confirmed prior to 31 December 2016

Oval Handling Circuit

The **Oval Circuit** is 1.2km and is the shortest of all the circuit configurations. The mix of medium to fast corners is blended with steep gradients to make this configuration highly challenging for any vehicle.

When hiring this configuration it includes full safety and medical cover but it does not include any pit garage allocation.

Specifications:

- 6 corners (4 Rights – 2 Lefts)
- Clockwise
- Medium to fast corners
- Gentle to steep gradient
- Air-conditioned porta-cabin near entrance to circuit

OVAL HANDLING



1.12km

FULL DAY

AED 18,000

09:00 - 12:30 &
13:30 - 17:00

1/2 DAY

AED 9,000

09:00 - 12:30 or
13:30 - 17:00

INCLUDES:

- Full Safety & Medical Cover



Day Sessions Only



Hill Handling Circuit

The Hill Circuit is 1.62km and the second shortest of all the circuit configurations. The blend of fast and slow corners keeps the driver or rider continuously busy.

The configuration includes a 600m long straight which will test any vehicle's braking capacity.

When hiring this configuration it includes full safety and medical cover but it does not include pit garage allocation.

Specifications:

- 7 corners (4 Rights – 3 Lefts)
- Clockwise
- Slow to medium speed corners
- Gentle to steep gradient
- 400m straight
- Air-conditioned porta-cabin near entrance to circuit
- Good for events where privacy is paramount

HILL HANDLING



FULL DAY

AED 25,000
09:00 - 12:30 &
13:30 - 17:00

1/2 DAY

AED 12,500
09:00 - 12:30 or
13:30 - 17:00

INCLUDES:

- Full Safety & Medical Cover



Day Sessions Only



Club Circuit

DUBAI AUTODROME

The **Club Circuit** is the most popular choice with a length of 2.46km. With direct access to the pit garages and close proximity to the hospitality suites, this makes a convenient solution for corporate days and lifestyle events.

The configuration hosts a multitude of fast and slow corners which challenge all aspects of a car or bike, driver or rider.

When hiring this configuration it includes full safety and medical cover plus 3 blocks of a pit garage.

Specifications:

- 8 corners (6 Rights – 2 Lefts)
- Clockwise
- Fast, medium to slow speed corners
- Gentle gradient
- 850m start/finish straight
- Access to pit garages
- Close proximity to hospitality suites

CLUB



2.46km

FULL DAY

AED 55,000

09:00 - 12:30 &
13:30 - 17:00

1/2 DAY

AED 27,500

09:00 - 12:30 or
13:30 - 17:00 or
18:00 - 21:30

INCLUDES:

- Full Safety & Medical Cover
- Race Administration Centre
- Technical Bay Garage
- 3 Blocks of a Paddock Garage



Floodlit Night
Session Available



DUBAI AUTODROME

INFORMATION & BOOKINGS: +971 (4) 367 8700 • info@dubaiautodrome.com

National Circuit

DUBAI AUTODROME

The National Circuit is a step up from the Club Circuit which links the Club and the Oval Circuits together, creating a lap distance of 3.56km. This configuration includes a series of fast exciting corners (turns 4,5 and 6) which will challenge the most seasoned drivers.

When hiring this configuration it includes full safety and medical cover plus 3 blocks of a pit garage.

Specifications:

- 13 corners (8 Rights – 5 Lefts)
- Clockwise
- Fast, medium to slow speed corners
- Gentle to high gradient
- 850m start/finish straight
- Access to pit garages
- Close proximity to hospitality suites

NATIONAL



3.56km

FULL DAY

AED 65,000

09:00 - 12:30 &
13:30 - 17:00

1/2 DAY

AED 32,500

09:00 - 12:30 or
13:30 - 17:00

INCLUDES:

- Full Safety & Medical Cover
- Race Administration Centre
- Technical Bay Garage
- 3 Blocks of a Paddock Garage



Day Sessions Only



DUBAI AUTODROME

INFORMATION & BOOKINGS: +971 (4) 367 8700 • info@dubaiautodrome.com

International Circuit

DUBAI AUTODROME

The **International Circuit** is a combination of the Club and Hill configurations, creating a lap of 4.29km in length. It includes challenging fast positive camber sweeps and long straights which will test the handling ability of any vehicle.

When hiring this configuration it includes full safety and medical cover plus 3 blocks of a pit garage.

Specifications:

- 11 corners (7 Rights – 4 Lefts)
- Clockwise
- Fast, medium to slow speed corners
- Gentle to medium gradient
- 800m long back straight
- 850m long start/finish straight
- Access to pit garages
- Close proximity to hospitality suites

INTERNATIONAL



FULL DAY

AED 75,000

09:00 - 12:30 &
13:30 - 17:00

1/2 DAY

AED 37,500

09:00 - 12:30 or
13:30 - 17:00

INCLUDES:

- Full Safety & Medical Cover
- Race Administration Centre
- Technical Bay Garage
- 3 Blocks of a Paddock Garage



Day Sessions Only



DUBAI AUTODROME

INFORMATION & BOOKINGS: +971 (4) 367 8700 • info@dubaiautodrome.com

Grand Prix Circuit

DUBAI AUTODROME

The **Grand Prix Circuit** incorporates all configurations and is the most technical out of all the configurations.

This circuit is mainly used for national and international race days, plus lifestyle events that require the full 5.39km length.

The challenging nature of the Grand Prix Circuit also lends itself well to vehicle manufacture launches and testing.

When hiring this configuration it includes full safety and medical cover plus 3 blocks of a pit garage.

Specifications:

- 11 corners (7 Rights – 4 Lefts)
- Clockwise
- Fast, medium to slow speed corners
- Gentle to medium gradient
- 800m long back straight
- 850m long start/finish straight
- Access to pit garages
- Close proximity to hospitality suites

GRAND PRIX



FULL DAY

AED 90,000

09:00 - 12:30 &
13:30 - 17:00

1/2 DAY

AED 45,000

09:00 - 12:30 or
13:30 - 17:00

INCLUDES:

- Full Safety & Medical Cover
- Race Administration Centre
- Technical Bay Garage
- 3 Blocks of a Paddock Garage
- Exclusive Full Circuit Use



Day Sessions Only



DUBAI AUTODROME

INFORMATION & BOOKINGS: +971 (4) 367 8700 • info@dubaiautodrome.com

OFF Road Zone

The **Off-Road Zone** is located within the Hill Circuit and shares the same access point. This zone is suitable for entry level 4x4 vehicles as well as more advanced 4x4 vehicles.

The rugged nature of this course provides something different for the avid off-road enthusiast that will test the capabilities of their 4x4 vehicle.

Specifications:

- 1.3km radius
- 120,000m² coverage area
- Incline and decline slope at a maximum angle of 45°
- Water pit
- Wheel articulation obstacle
- Rough terrain
- Activation area for canopy setup
- Mountain bike course
- Air-conditioned porta-cabin near entrance to circuit

OFF ROAD ZONE



FULL DAY

AED 8,500

09:00 - 12:30 &

13:30 - 17:00

1/2 DAY

AED 4,250

09:00 - 12:30 or

13:30 - 17:00

INCLUDES:

- Full Safety & Medical Cover

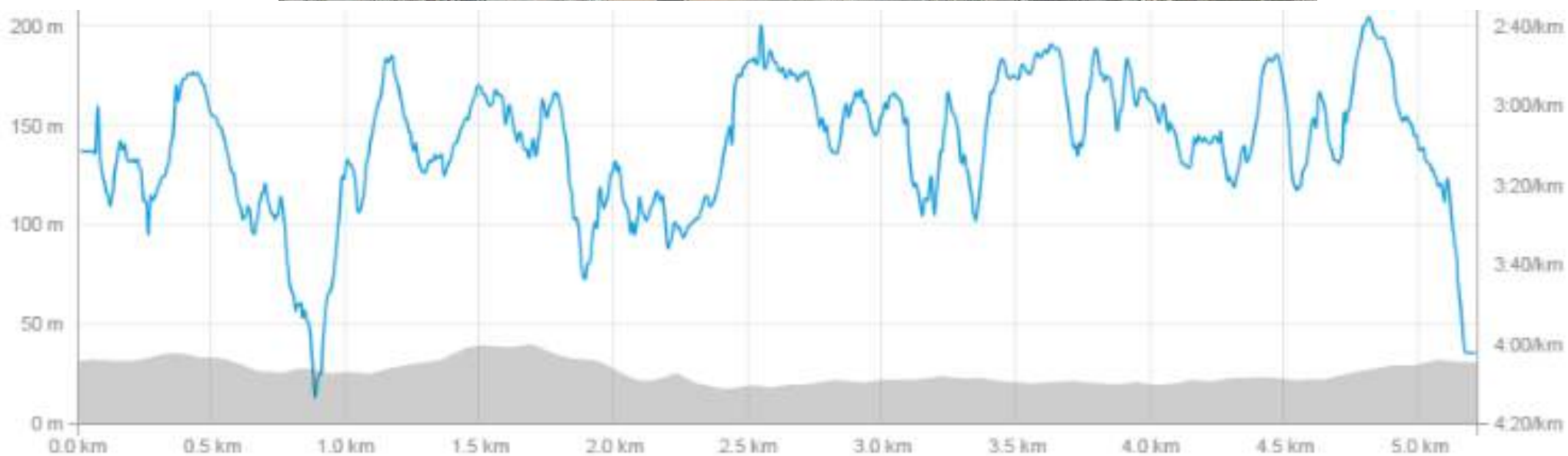


Day Sessions Only



Circuit Elevation

DUBAI AUTODROME



Paddock and Pit Garages

The Paddock and Pit Garage area has multifunctional use which incorporates a flat tarmac area with surrounding fencing and gated access from three areas. There is close proximity parking in P1, P2 and P3.

The Paddock area can be used for parking areas, entertainment areas, structural build, concerts, DJ, dynamic and static activities.

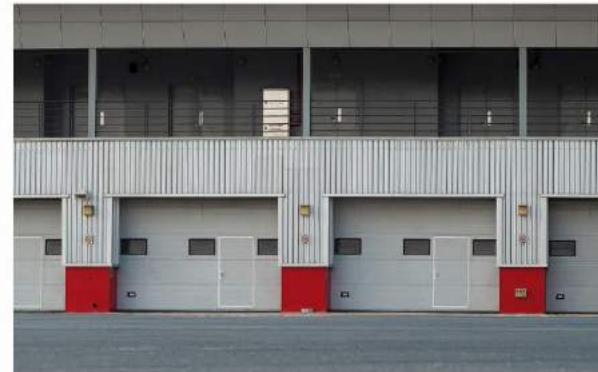
The Pit Garage area is mainly used for car storage and setup during vehicle and corporate events.

PADDOCK

Paddock Area:
• 240m x 58.8m

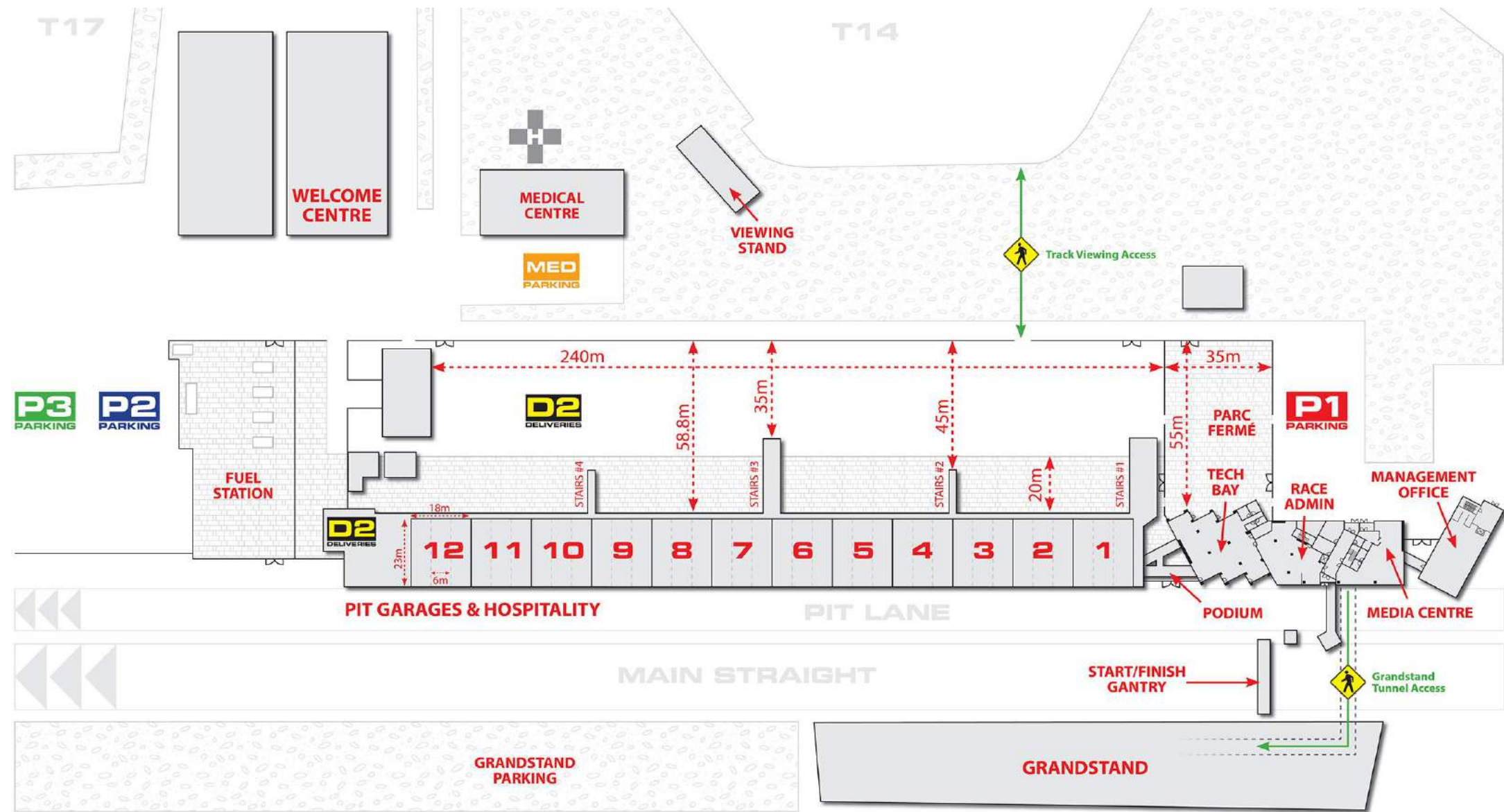
Park Fermé:
• 35m x 55m

Pit Garage:
• 23m x 18m each garage
• 23m x 6m each bay
• 3 bays in each garage
• Ceiling Height: 3m
• Power: Single & 3-Phase



Cost for Paddock Hire: AED 30,000 per day

Paddock master view



Paddock



The Paddock and Pit Garage area has multifunctional use which incorporates a flat tarmac area with surrounding fencing and gated access from these areas. There is close proximity parking in P1, P2 and P3.

The Paddock area can be used for parking area, entertainment areas, structural build, concerts, DJ, dynamic and static activities.

The Pit Garage area is mainly used for car storage and setup during vehicle and corporate events.

Pit Garage Dimensions

DUBAI AUTODROME



- Pit garage: (AED 3,500 per day)
 - 23m x 18m each garage
 - 23m x 6m each bay
 - 3 bays in each garage
 - Ceiling height: 3m
 - Power: Single & 3-Phase



Doors size: Height: 3 meters
Width: 4,77 meters

Pit Garage Branding

DUBAI AUTODROME



Hospitality suites



Cost for a Single Suite: AED 6,000 per day
Cost for Double Suite: AED 10,000 per day

The Hospitality Suites and Race Paddock Area at Dubai Autodrome are ideal for corporate events with spacious areas, catering kitchens on-site, impressive views of the main straight and easy access to the pit garages below. There are several zones to choose from to best accommodate guests or clients.



All of these areas (and even parts of the race track) are available for branding, allowing customisation of the facilities for bespoke events. Whether a conference, product launch, customer day or a thank you to your colleagues, Dubai Autodrome offers an ideal environment for you and your guests.

Hospitality suites



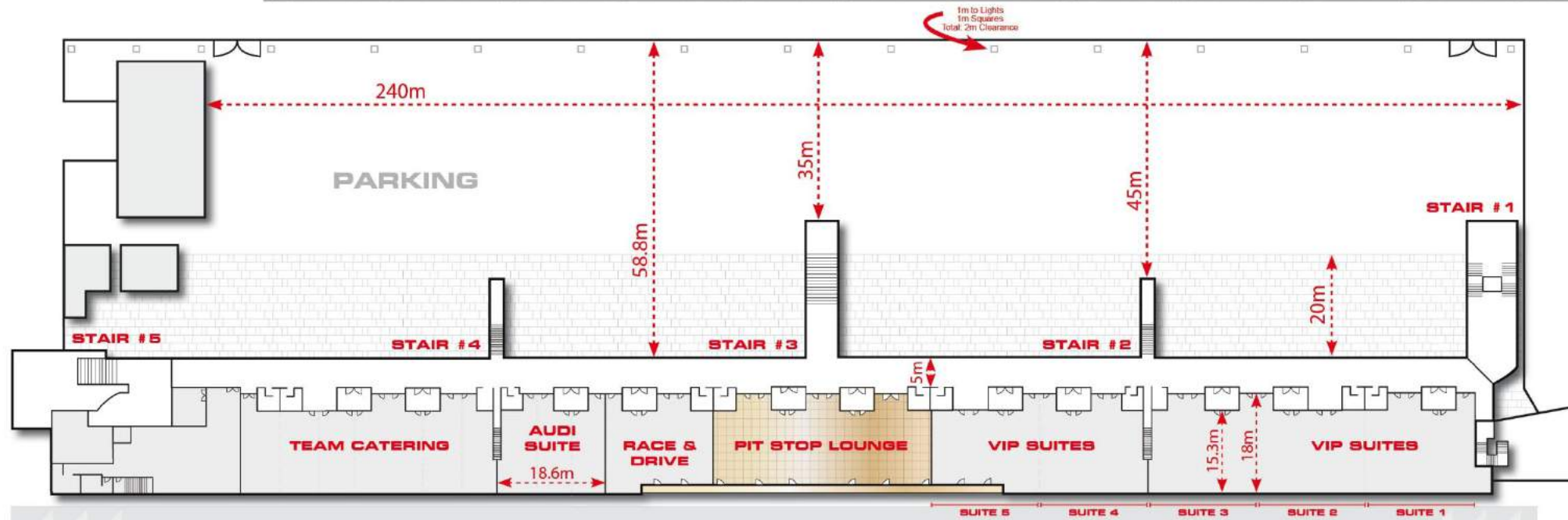
- ✓ 12 Hospitality Suites
- ✓ Approximately 320m² per suite
- ✓ Multiple suite configurations and sizes available
- ✓ Rooms can be partitioned
- ✓ Each suite has its own kitchen prep area
- ✓ Terraced suites available



- ✓ 1 Existing furnished suite available (Suite 8)
- ✓ 5 Star Catering available
- ✓ Easy access from parking area
- ✓ Branding opportunities
- ✓ TVs available in suite
- ✓ PA System with speakers available a

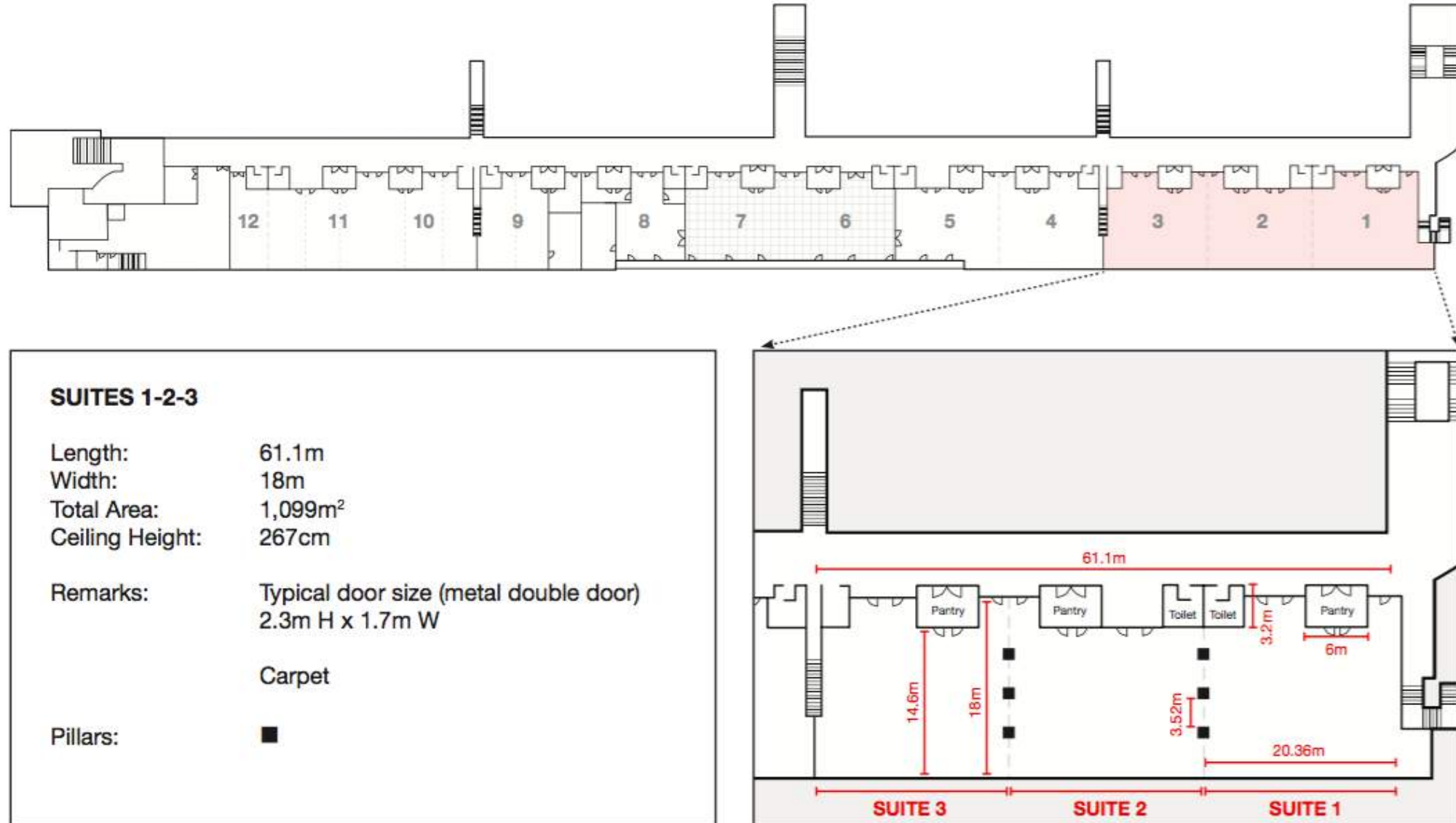
Hospitality suites specifications

DUBAI AUTODROME

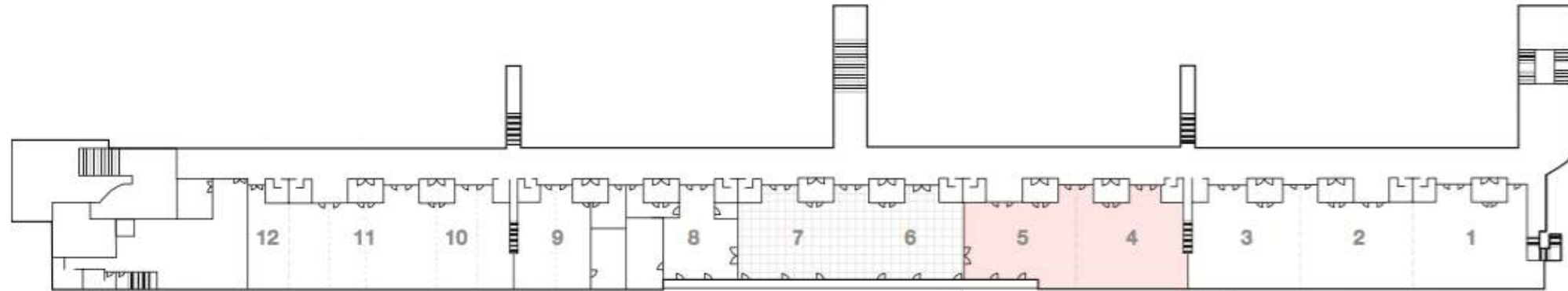


Hospitality suites specifications

DUBAI AUTODROME



Hospitality suites specifications



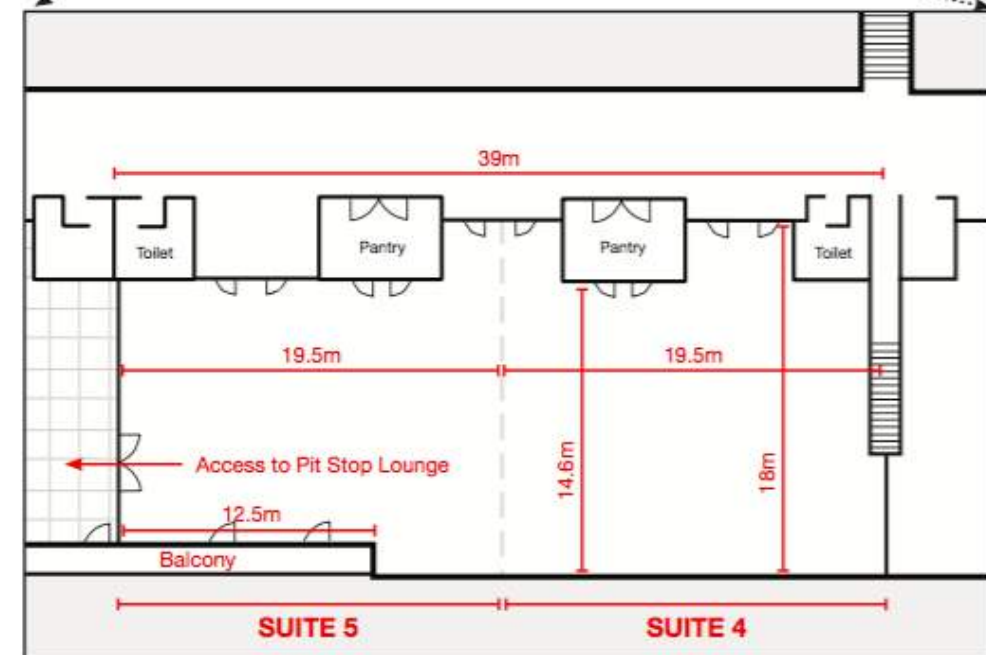
SUITES 4-5

Length: 39m
Width: 18m
Total Area: 702m²
Ceiling Height: 3m

Remarks: Typical door size (metal double door)
2.3m H x 1.7m W

Access door size (wooden)
2.5m H x 2.5m W

Carpet, Balcony Access



Hospitality suites specifications



PIT STOP LOUNGE (SUITES 6-7)

Length: 39.5m

Width: 18m

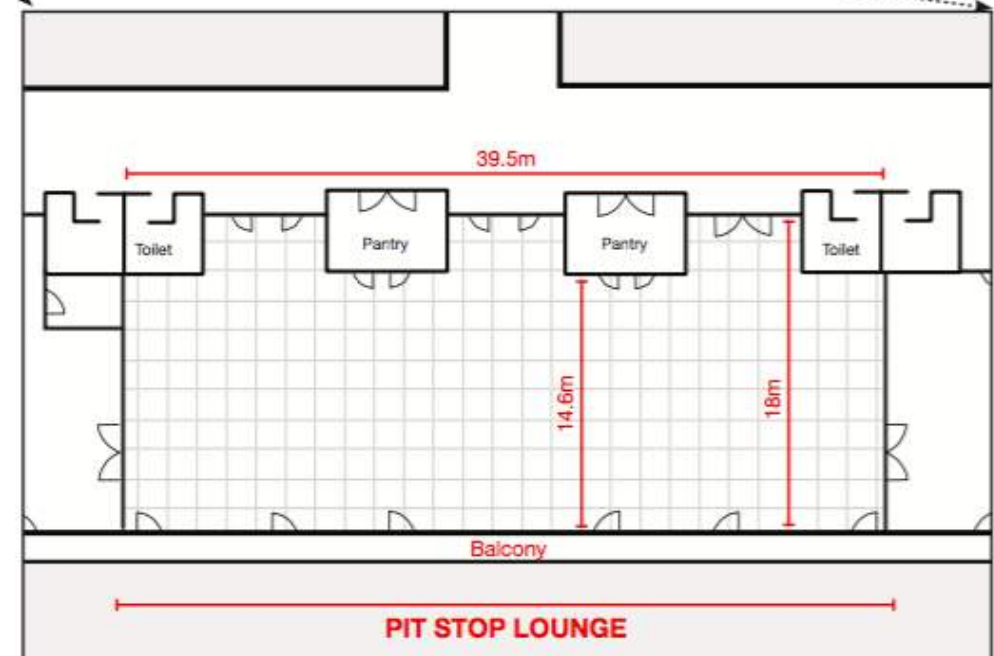
Total Area: 711m²

Ceiling Height: 3m

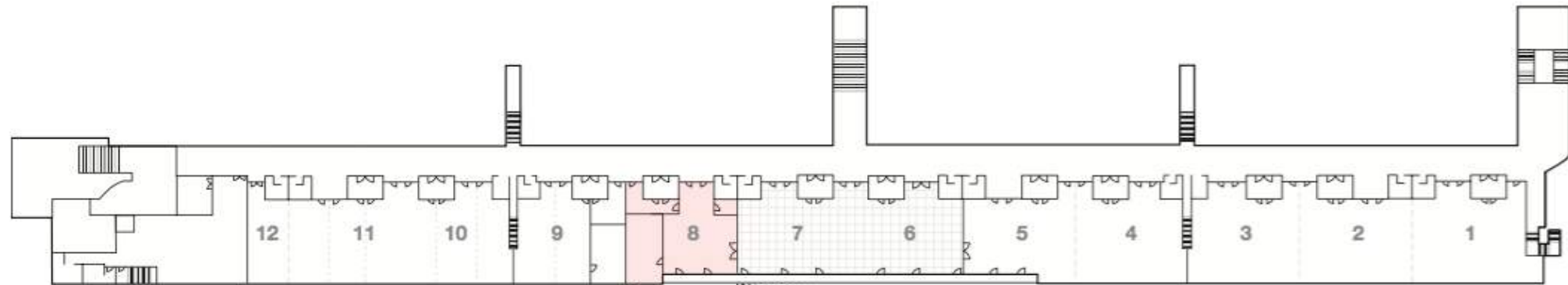
Remarks: Typical door size (metal double door)
2.3m H x 1.7m W

Access door size (wooden)
2.5m H x 2.5m W

Tile Floor, Balcony Access



Hospitality suites specifications



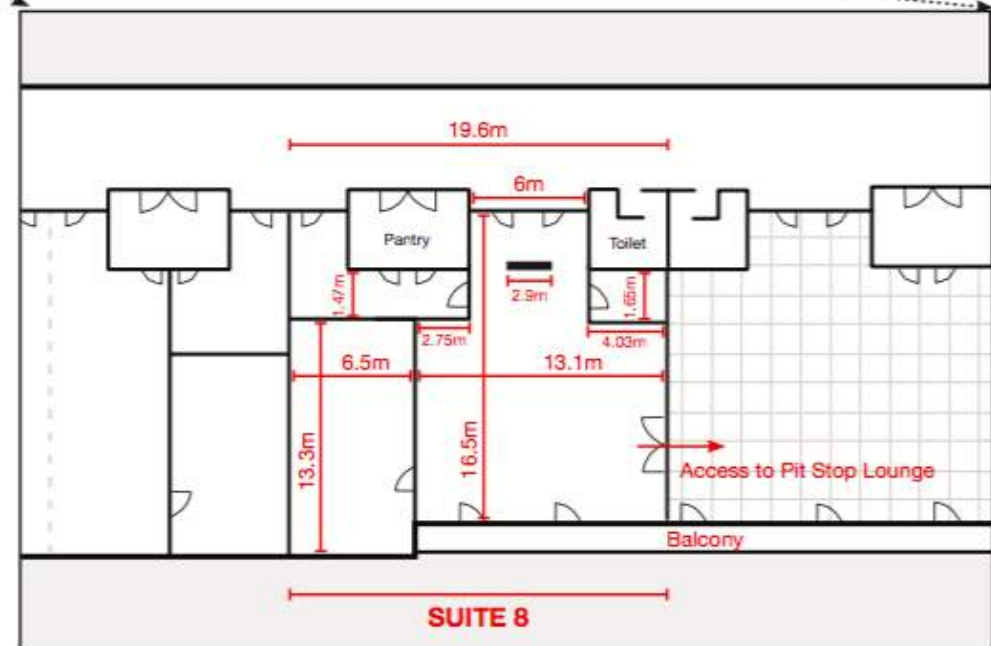
SUITE 8

Length: 19.6m
Width: 16.5m
Total Area: 323.4m²
Ceiling Height: 3m

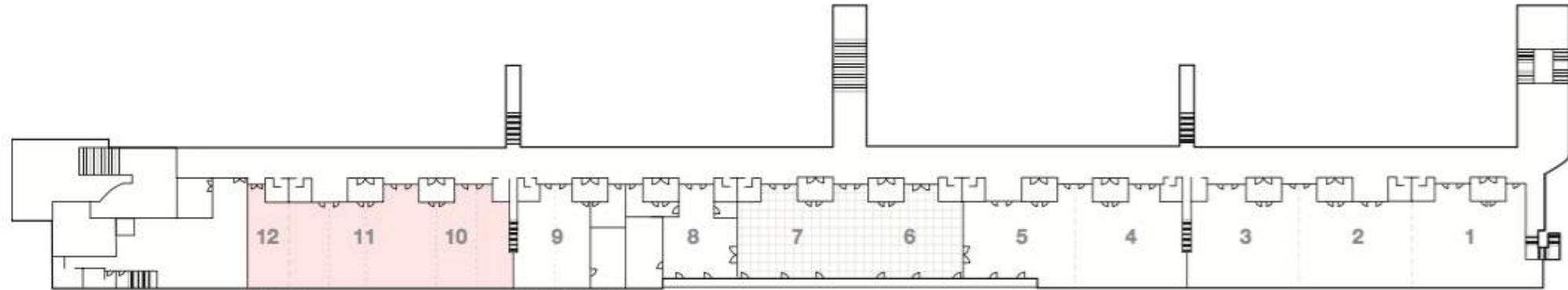
Remarks: Typical door size (metal double door)
2.3m H x 1.7m W

Access door size (wooden)
2.5m H x 2.5m W

Carpet, Balcony Access, Briefing Room



Hospitality suites specifications

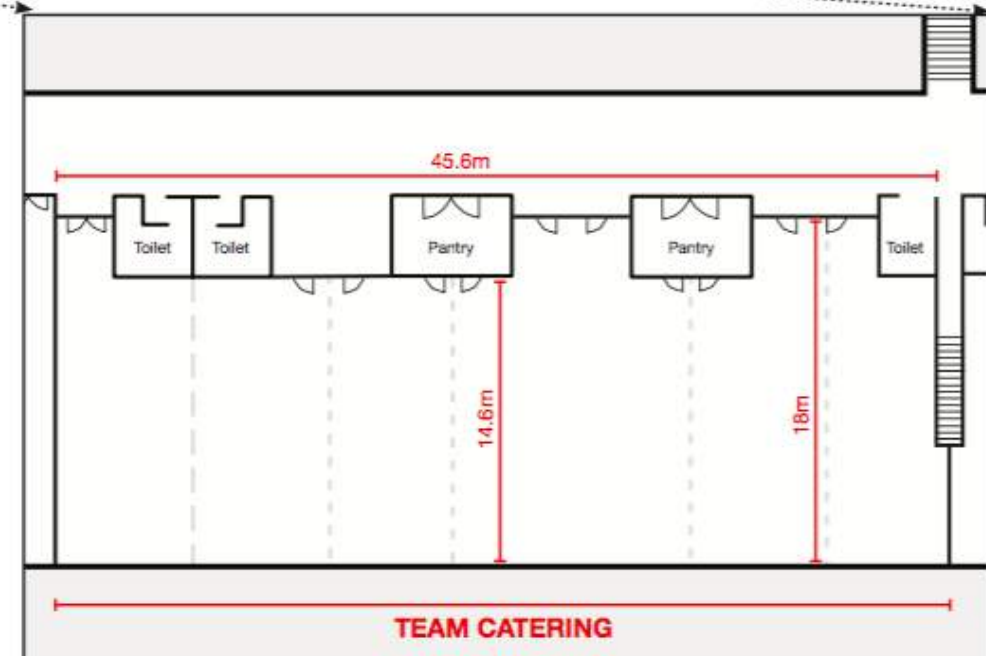


TEAM CATERING (SUITES 10-11-12)

Length: 46.5m
Width: 18m
Total Area: 837m²
Ceiling Height: 3m

Remarks: Typical door size (metal double door)
2.3m H x 1.7m W

Carpet



Media room

DUBAI AUTODROME



Race admin room

DUBAI AUTODROME



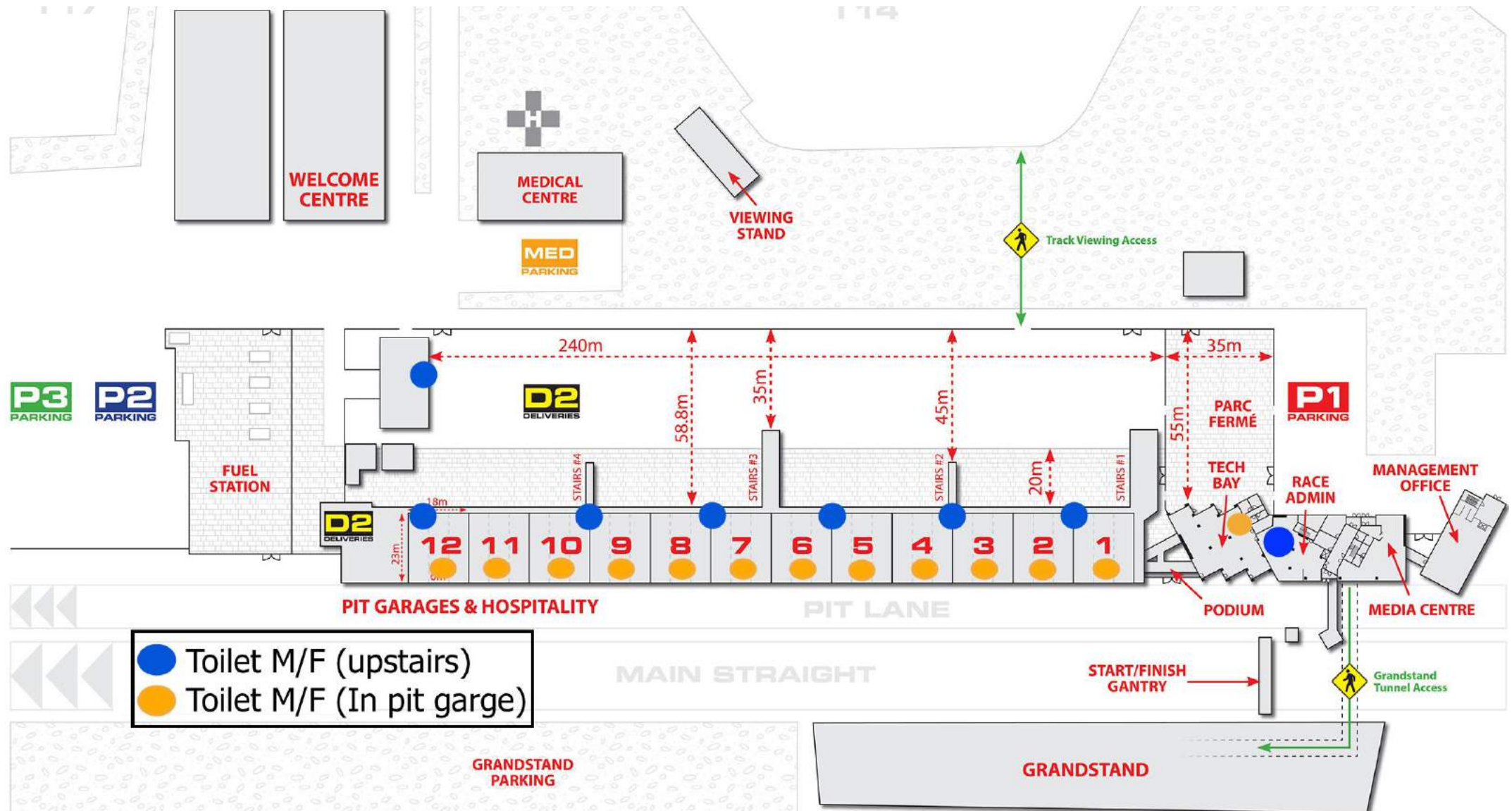
Park Ferme



- Length: 55 meters
- Width: 35 meters
- Parking: approximatively 60 cars



Number of bathrooms and locations



Run off area sizes

Area code	Turn No/Zone	Inside/outside Location	Total Zone m2
Turn 1	1	Outside	7400 m ²
Turn 2	2	Outside	10.300 m ²
Turn 17	17	Outside	5000m m ²
Turn 18	18	Outside	2100 m ²
Straight T2 & T3	Straight in between turn 2 & 3	Inside	4250 m ²
Turn 3&4	3&4	Outside	17.800 m ²
Turn 6	6	Outside	5600 m ²
Turn 8	8	Outside	4500 m ²
Turn 9	9	Inside	12.150 m ²
Straight T9 & T10	9&10	Outside	5000 m ²
Turn 10	10	Outside	7500 m ²
Turn 12I	12	Inside	15.200 m ²
Turn 12O	12	Outside	6400 m ²
Club link		Outside	6000 m ²
Turn 14I	14	Inside	3900 m ²
Turn 14O1	14	Outside	4500 m ²
Turn 14O2	14	Outside	3500 m ²
Turn 15	15	Outside	7400 m ²
Turn 16I	16	Inside	2500 m ²
Turn 16O	16	Outside	15.500 m ²

Run off area sizes



Run off area sizes

DUBAI AUTODROME



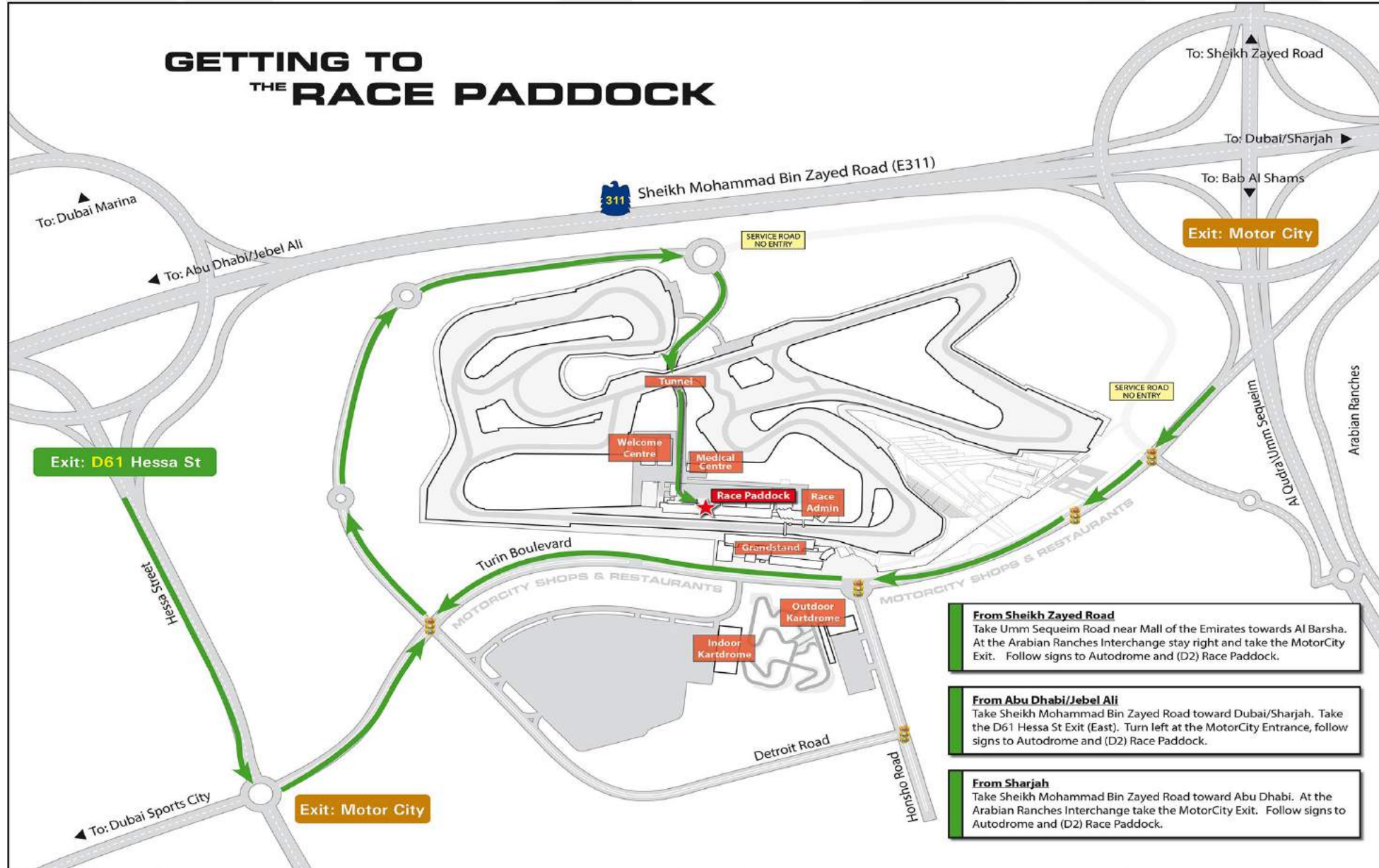
Run off area sizes

DUBAI AUTODROME



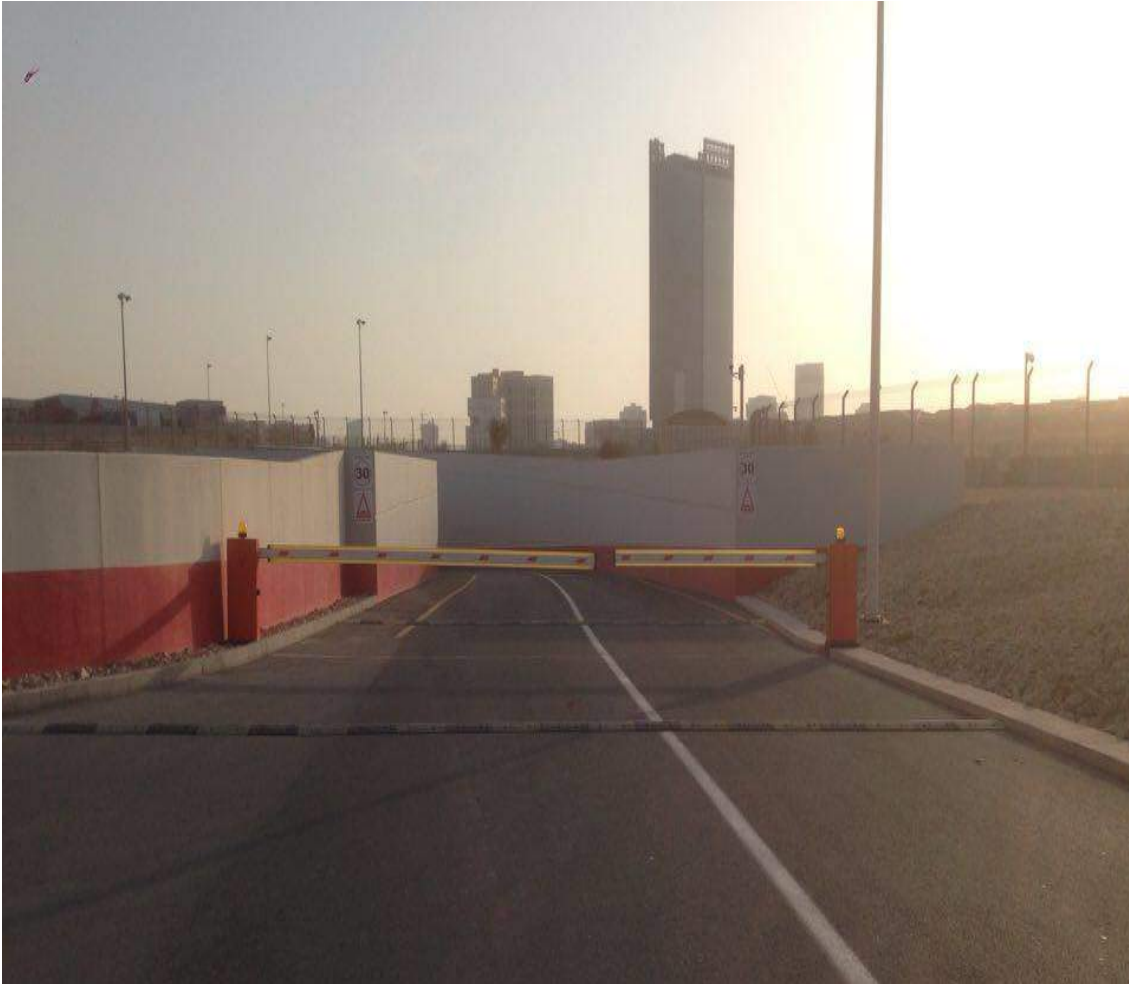
2. Access areas

Front access (tunnel)



Front access (tunnel)

DUBAI AUTODROME



Height of the tunnel: 9 meters

Loading bay zone (L1)

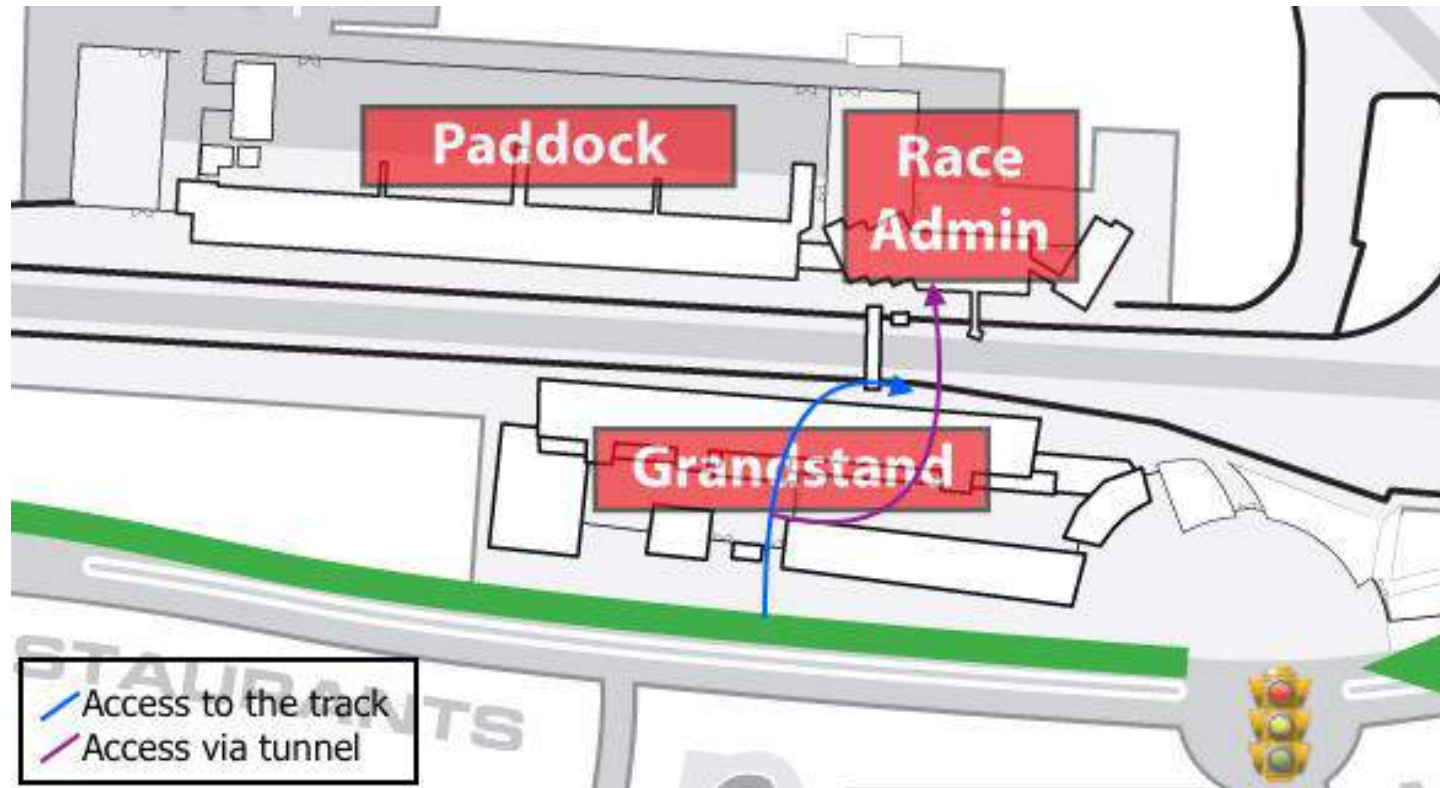


Elevator:

- Width: 110 cm
- Height: 209 cm
- Depth: 140 cm

Back access (grandstand + tunnel options)

DUBAI AUTODROME



3. Parking areas

Parking 1 and Parking 2/3

DUBAI AUTODROME

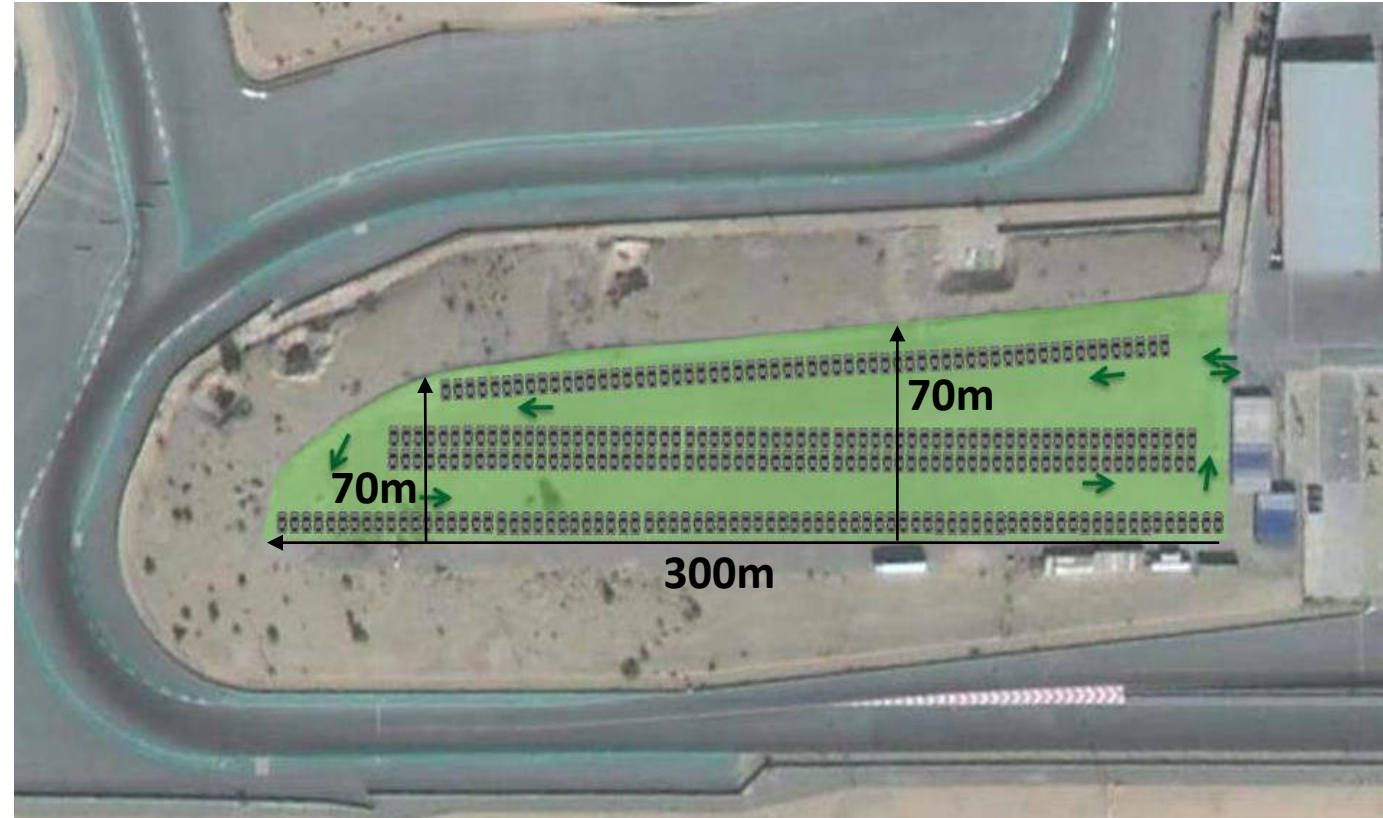
P1
PARKING



80 cars

P3
PARKING

P2
PARKING

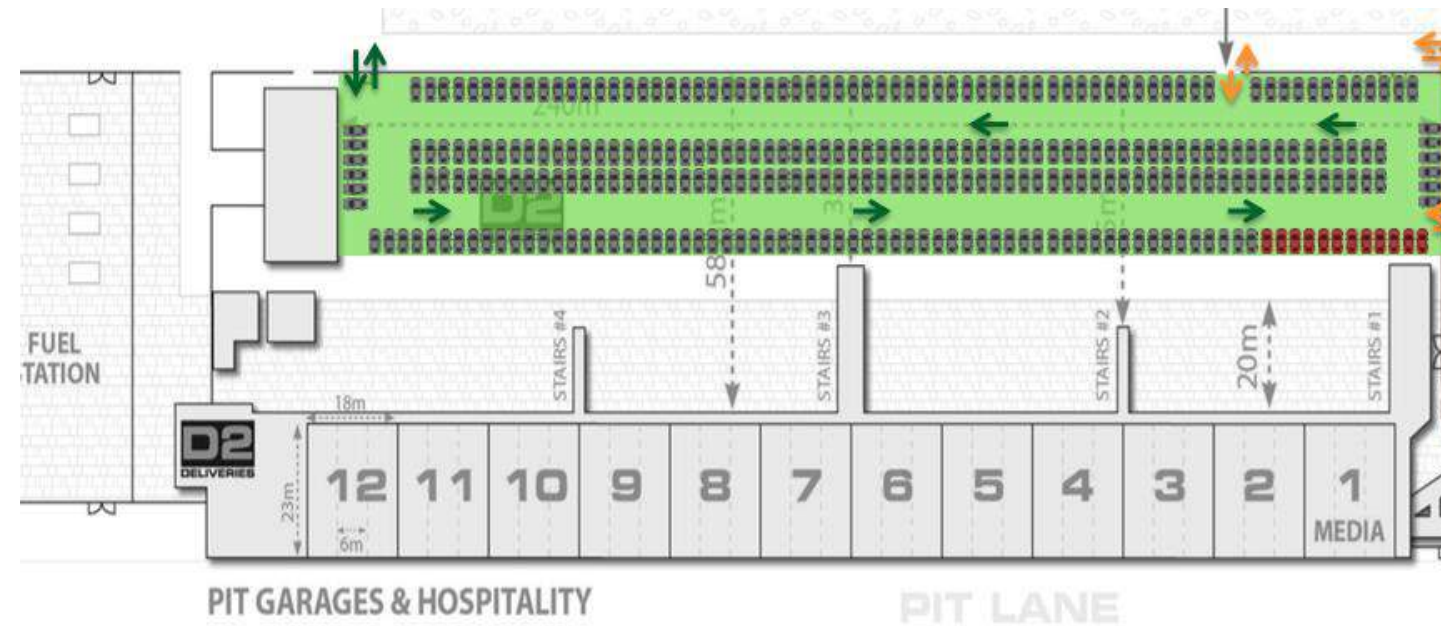


920 cars

Paddock and Park Ferme

DUBAI AUTODROME

Paddock



360 cars

Park Ferme



60 cars

Grand Stand and Parking Motor City

DUBAI AUTODROME



980cars



1500 cars

Parking Overview

- Parking 1: 80 cars
- Parking 2/3: 920 cars
- Paddock: 360 cars
- Park Ferme: 60 cars
- Grandstand: 980 cars
- Additional parking in motor city: 1500 cars

Total: 3900 cars

4. Branding areas

Paddock

DUBAI AUTODROME



Paddock

DUBAI AUTODROME



Pit Garage

DUBAI AUTODROME



Pit lane

DUBAI AUTODROME



Circuit

DUBAI AUTODROME



Arch 25m x 1,3 m



Stage and platform on paddock

DUBAI AUTODROME



Hospitality Suites

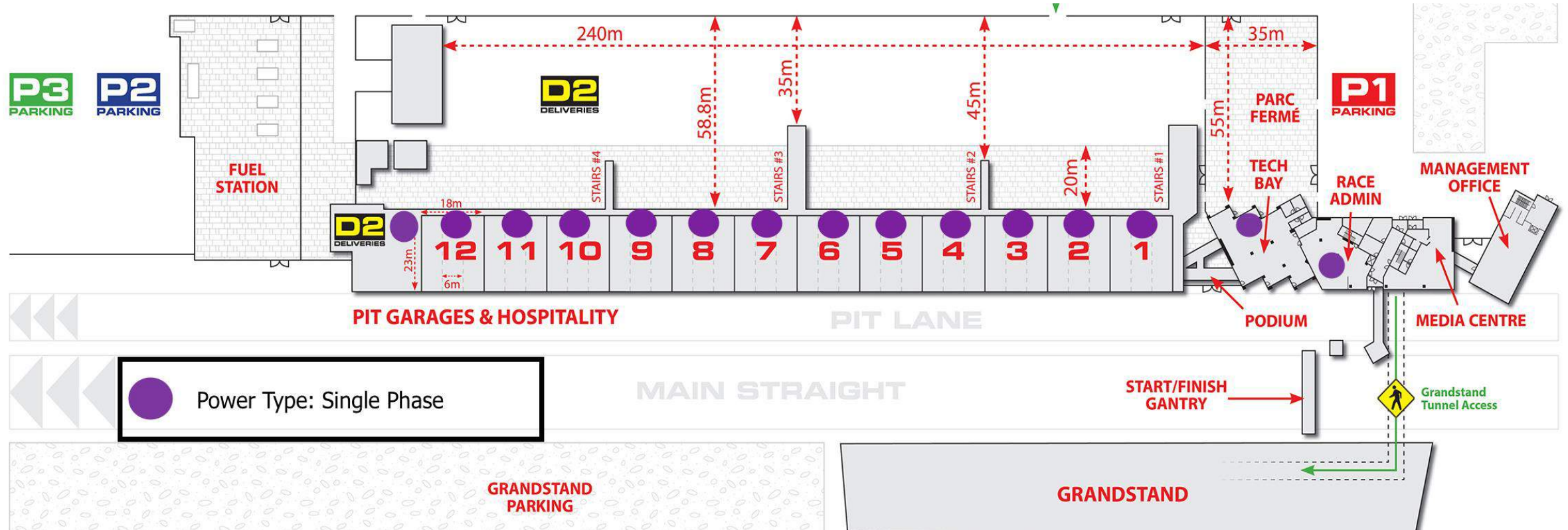
DUBAI AUTODROME



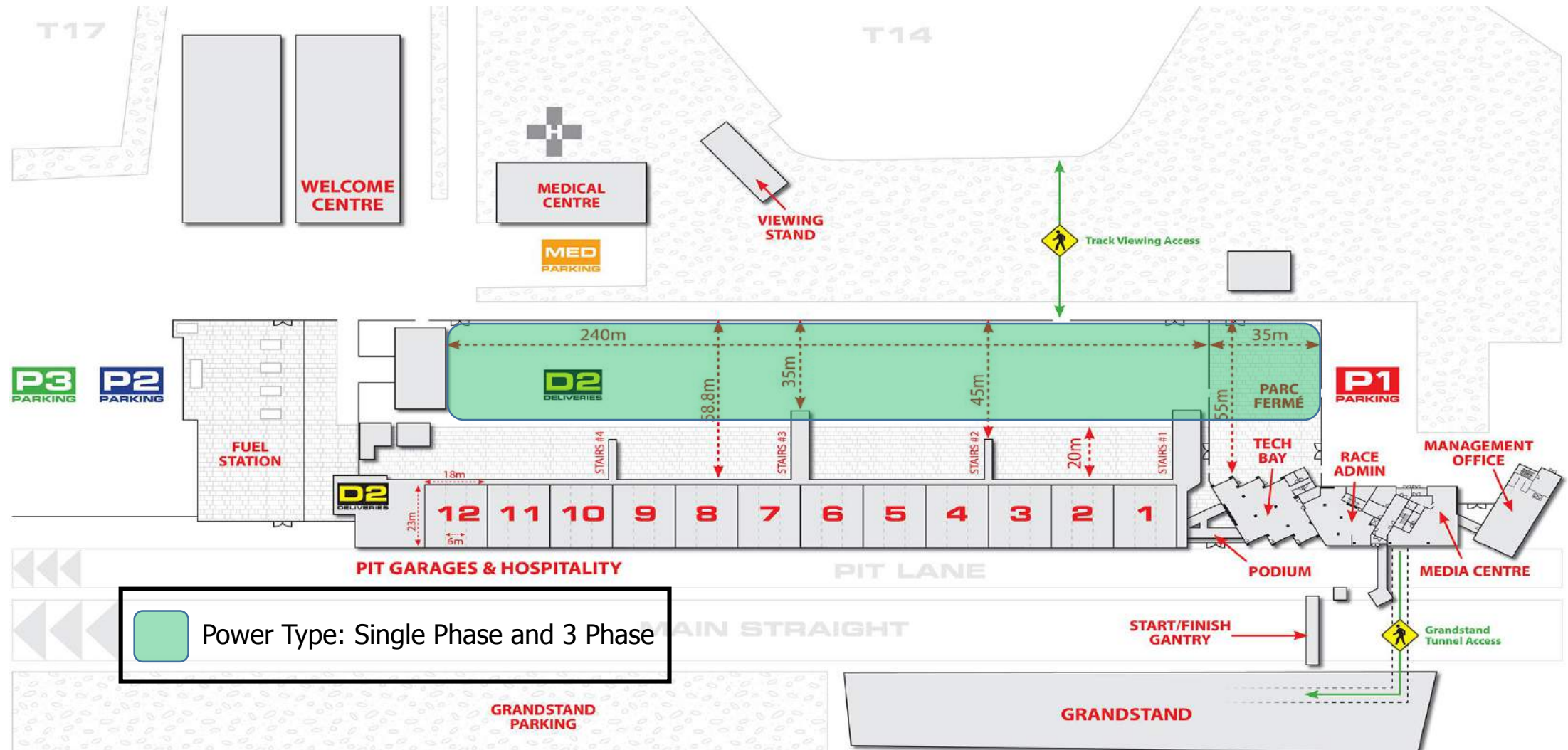
6. Power areas

Suite power locations

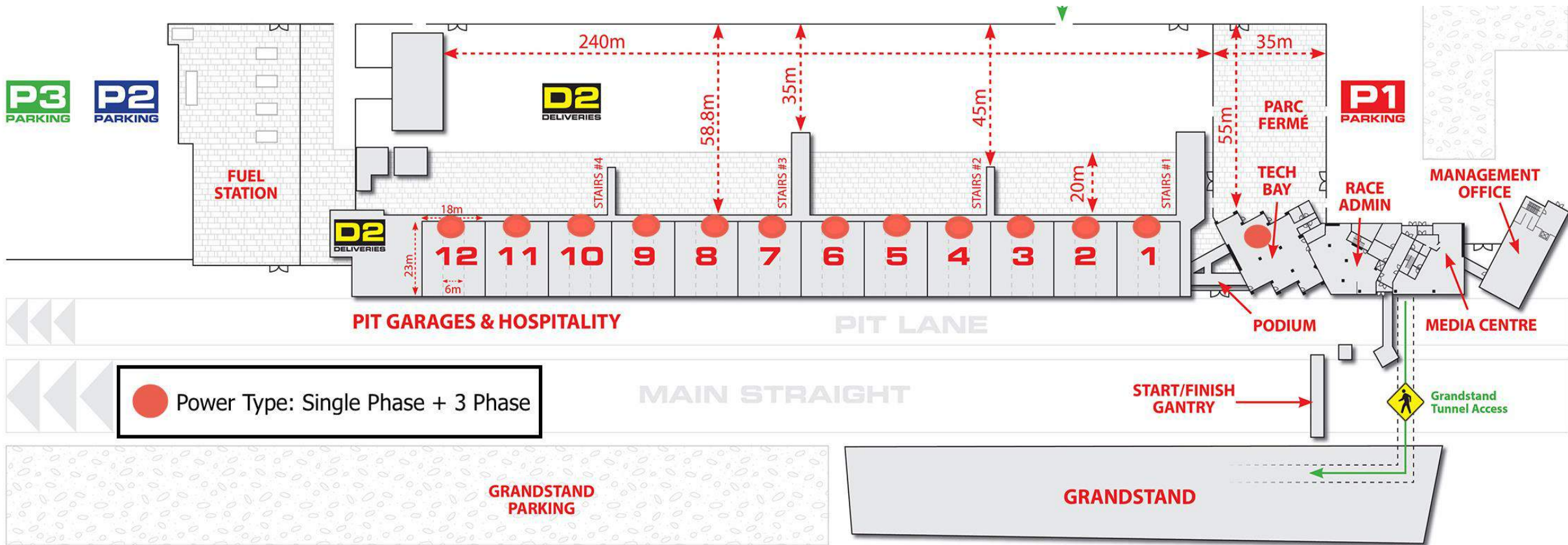
DUBAI AUTODROME



Paddock: Temporary Power Accessibility



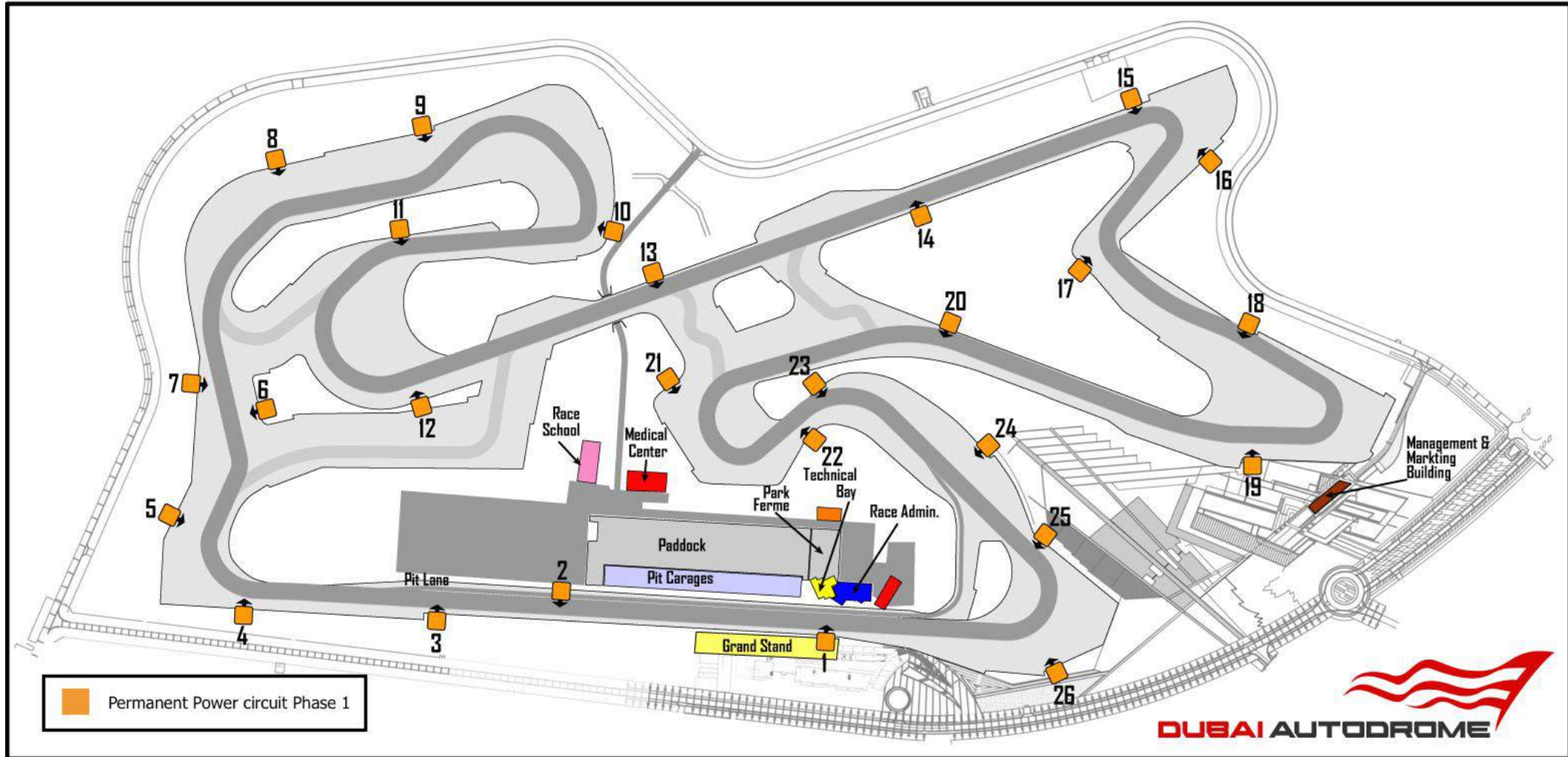
Pit garage power locations



Circuit power locations

DUBAI AUTODROME

Dubai Autodrome - Grand Prix Circuit - Power Points - Phase 1



Each marshal post has a 13 amp power socket

7. Safety plan

A. Map

DUBAI AUTODROME

Dubai Autodrome - Grand Prix Circuit - Safety Plan for Non-FIA International Events

