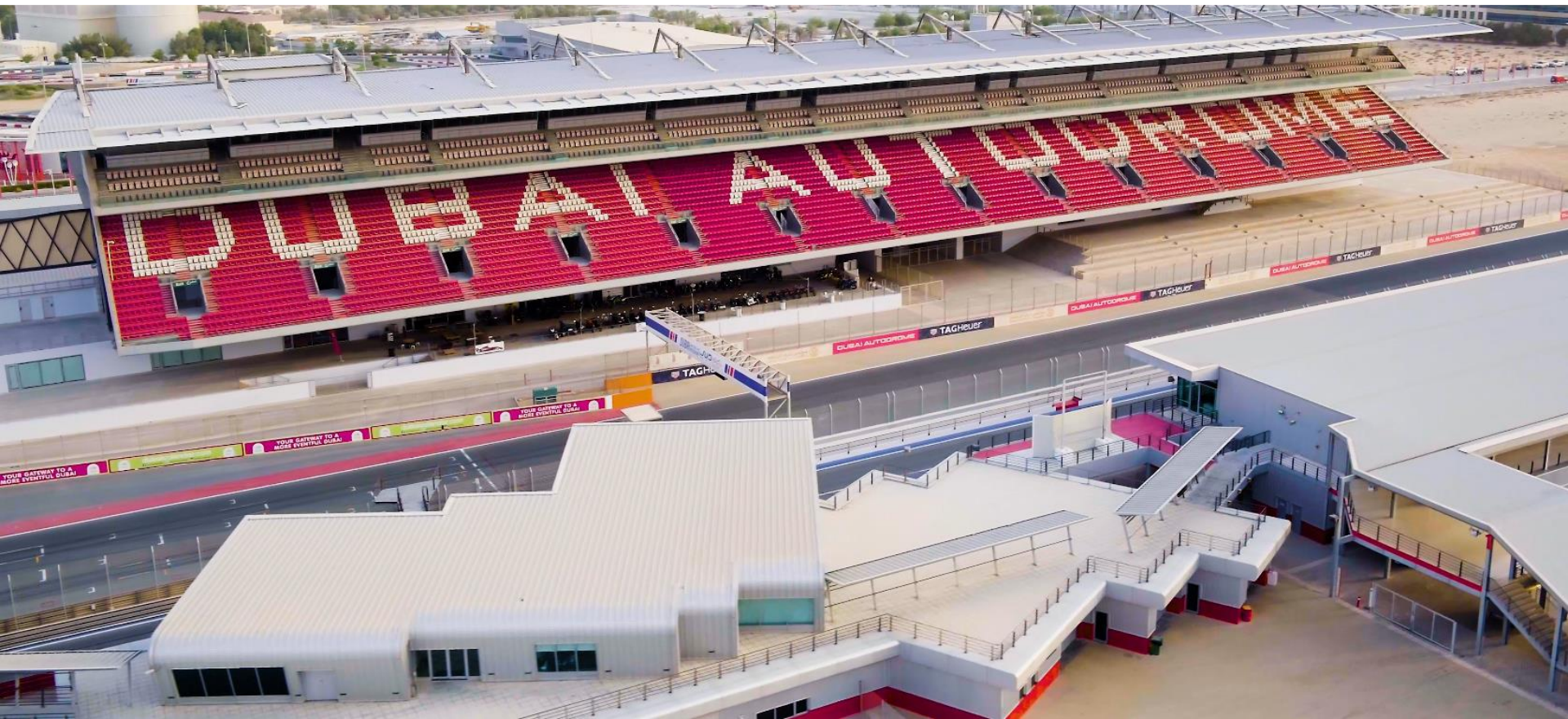




# ***INDOOR & OUTDOOR EVENT ARENAS***



# *HOST YOUR EVENT IN WINNING STYLE*

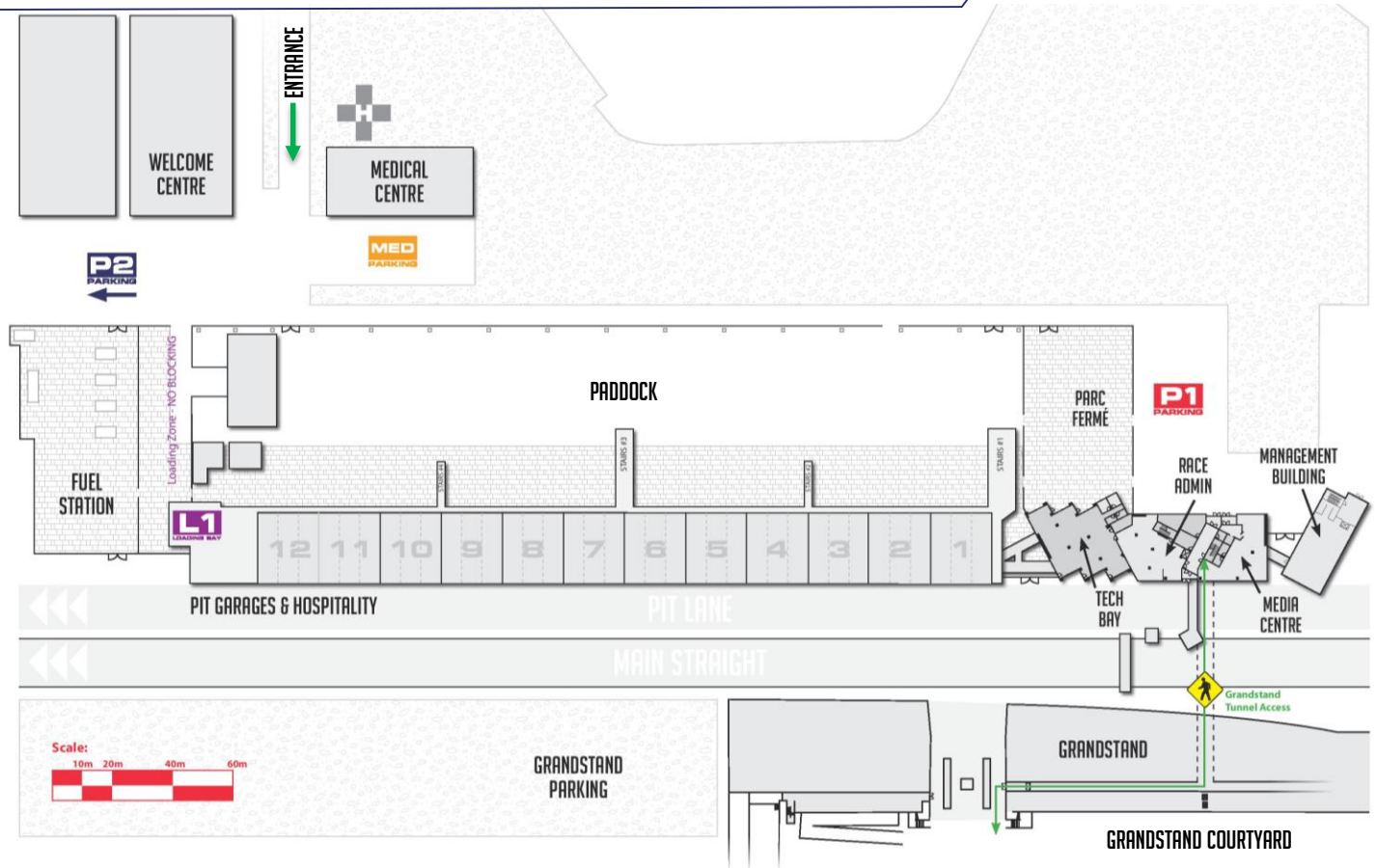
Dubai Autodrome features a multitude of indoor and outdoor Event Arenas on it's 620,310 sqm venue that are ideal for intimate functions or high capacity crowds.

Whether you are planning to host corporate events, product launches or conferences requiring spacious areas with catering kitchens and impressive views of the race circuit or larger areas for concerts, exhibitions or Ramadan tents - Dubai Autodrome's Arenas offer a unique setting to accommodate your guests or clients.

All of these areas (and even parts of the race track) are available for branding, allowing customization of the facilities for bespoke events. Whether a conference, product launch, customer day or a thank you to your colleagues, Dubai Autodrome offers an ideal environment for you and your guests.



# VENUE MAP

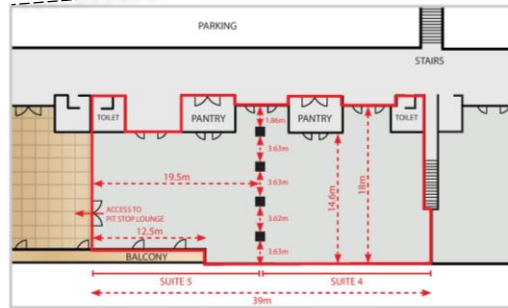


# *HOSPITALITY SUITE OVERVIEW*

Dubai Autodrome offers 12 hospitality suites, all located above the garages and with view of the circuit's main straight.

- ✓ Rooms can be partitioned
- ✓ Each suite has its own kitchen prep area
- ✓ Terraced suites available
- ✓ Carpet and tiled suites
- ✓ Existing furnished suite available (Suites 8 & 9)
- ✓ Briefing / Presentation Rooms available in Suites 8 & 9
- ✓ 5-Star Catering available
- ✓ Easy access from parking area
- ✓ Possibility to lift cars into suites
- ✓ Branding opportunities
- ✓ Access to Suites on 1<sup>st</sup> Floor via elevators

# SUITE SPECIFICATIONS

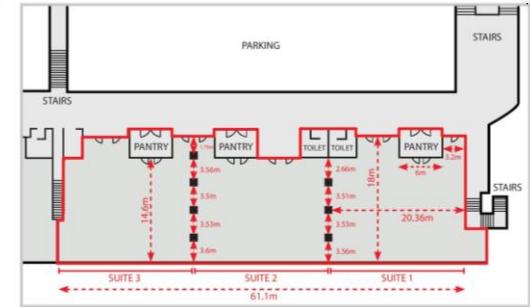


**SUITES 4-5**

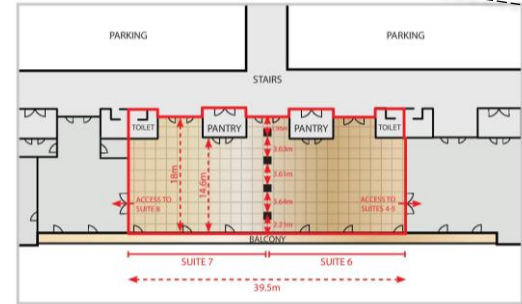
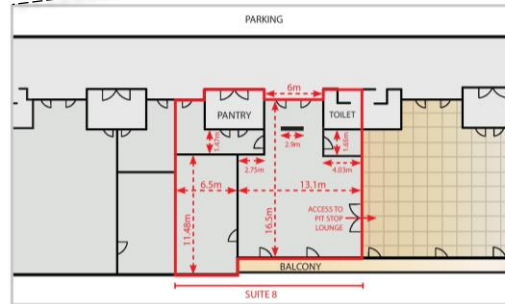
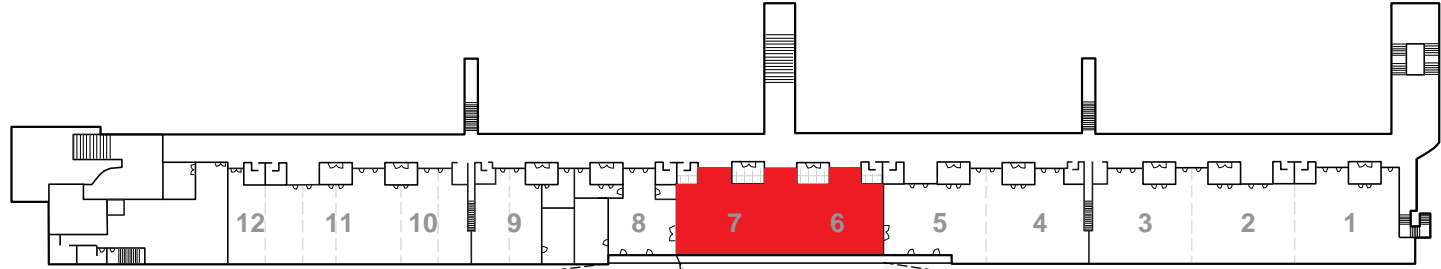
Floor: Carpet  
Length: 39m  
Width: 18m  
Total Area: 702m<sup>2</sup>  
Ceiling Height: 2.69m  
Entry Doors: Double (Metal)  
Typical Entry Door Size:  
Height: 2.3m  
Width: 1.7m  
Access Door Size:  
Height: 2.5m  
Width: 2.5m

**SUITES 1-3**

Floor: Carpet  
Length: 61.1m  
Width: 18m  
Total Area: 1,099m<sup>2</sup>  
Ceiling Height: 2.69m  
Entry Doors: Double (Metal)  
Typical Entry Door Size:  
Height: 2.3m  
Width: 1.7m



# SUITE SPECIFICATIONS



# SUITE SPECIFICATIONS

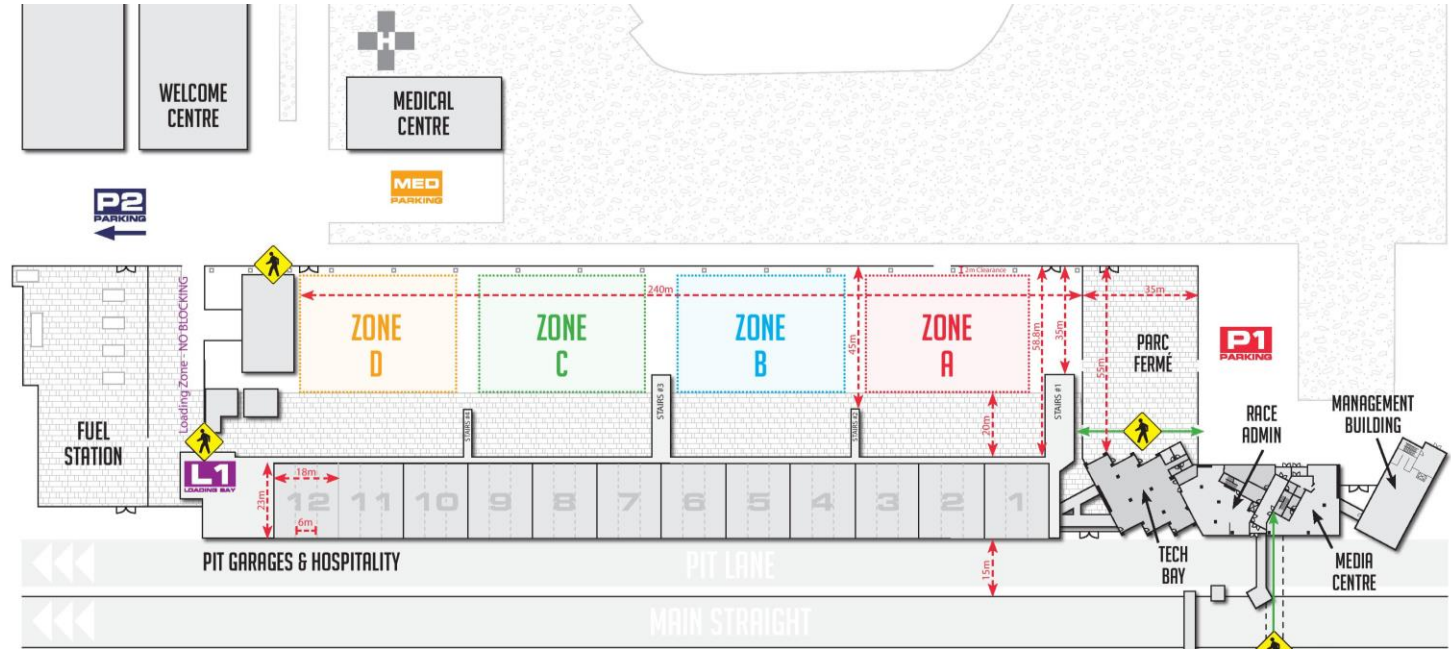


## TEAM CATERING

Floor: Carpet  
Length: 46.5m  
Width: 18m  
Total Area: 837m<sup>2</sup>  
Ceiling Height: 3m  
Entry Doors: Double (Metal)  
Typical Entry Door Size:  
Height: 2.3m  
Width: 1.7m

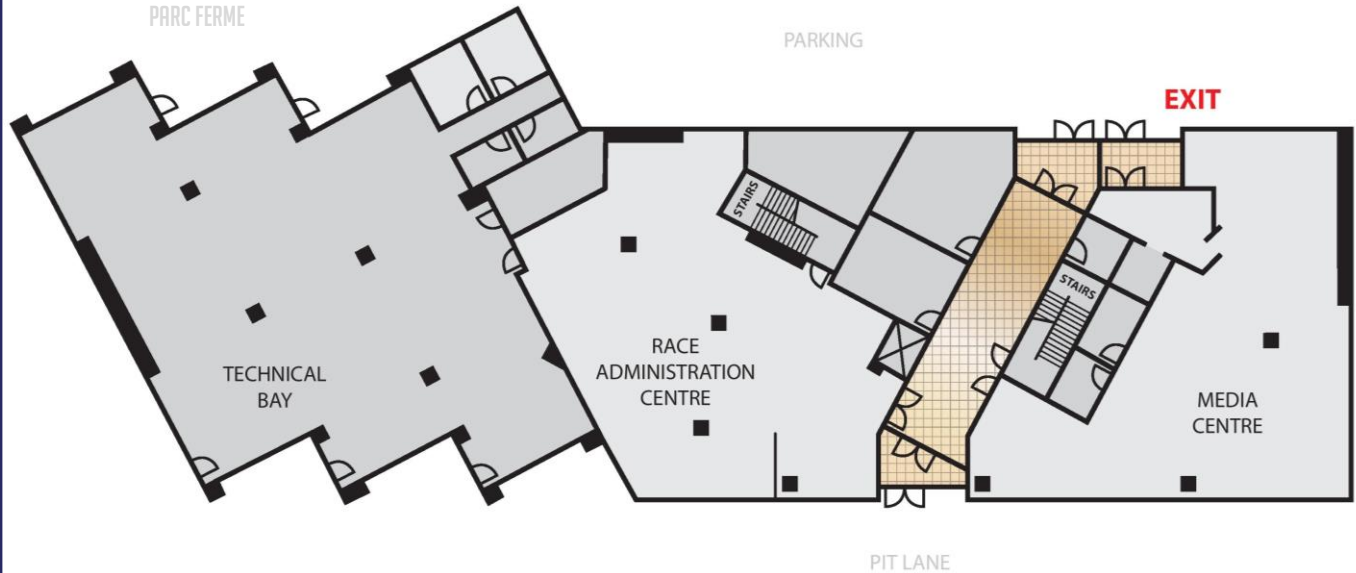


# RACE PADDOCK SPECIFICATIONS



- ✓ Length: 240m
- ✓ Total Area: 13,920 sqm
- ✓ Width: 58m
- ✓ Two Access Gates

# ***MEDIA CENTRE, RACE ADMIN & TECH BAY***



## Tech Bay:

- ✓ Length: 22m
- ✓ Width: 20m
- ✓ Male & Female Bathroom
- ✓ Private Parking & Event Area in Parc Ferme

## Race Admin

- ✓ Length: 22m
- ✓ Width: 21m
- ✓ Reception Area
- ✓ Ceiling Projector

## Media Centre

- ✓ Length: 21m
- ✓ Width: 21m
- ✓ Build in desks for 80 pax
- ✓ Separate Pantry

# *PIT GARAGE SPECIFICATIONS*



- ✓ 23m x 18m each garage
- ✓ 23m x 6m each bay
- ✓ 3 bays per garage
- ✓ Ceiling height: 3m
- ✓ Power: Single- & 3-Phase (13A, 16A & 32A)
- ✓ Toilet & Shower facilities in each garage

# EXPERIENCE GARAGE 10



- ✓ Fully furnished garage
- ✓ Additional AC units
- ✓ Reception desk available
- ✓ Frames can be used for own branding
- ✓ Four race simulator systems in garage
- ✓ Sound system for background music included

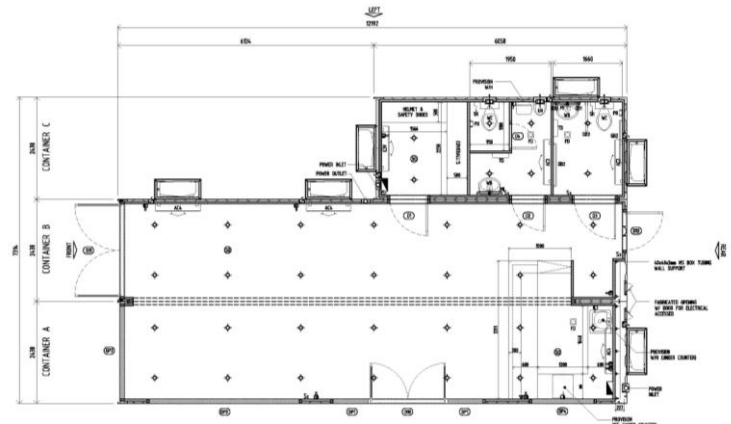
# *GRANDSTAND DECK*

- ✓ Length: 57.5m
- ✓ Width: 15.25m
- ✓ Total Area: 873 sqm
- ✓ Adjacent to selection of Grandstand Suites
- ✓ Accessible via elevator
- ✓ Overlooking whole circuit

# HILL CIRCUIT SMARTBOX



- ✓ Full airconditioned
- ✓ Male & Female Bathrooms
- ✓ Access to Hill Paddock and Circuit
- ✓ Viewing area on roof
- ✓ Parking for 50 cars



# INDOOR KARTDROME

- ✓ Length: 109m
- ✓ Width: 42m
- ✓ Total Area: 4,578 sqm
- ✓ Ceiling Height: 9m
- ✓ Separate Meeting / Function Rooms
- ✓ Floor Lightning
- ✓ Multiple WC

